



UNIVERSITÀ DEGLI STUDI DI MILANO

Dipartimento di Scienze Agrarie e Ambientali



# The Greenways Heritage tourism GIS (Geographical Information System), promoting greenways across Europe

*Giulio Senes*

# The Greenways Heritage Project

**Call Objective.** “*Diversifying* and increasing the visibility of *Europe's transnational tourism offer* - supporting the promotion and development of transnational thematic tourism products linked to *Cultural and Creative Industries (CCI)*”

**Objective.** The **development and diversification** of the **European touristic offer**, through:

- ✓ the creation and dissemination of a **new touristic product** related to **UNESCO sites** and **greenways**, in order to **attract more tourists** and to **generate an economic impact** on territories which have both resources;
- ✓ the **use of innovative technologies** applied to greenways and UNESCO sites to **better inform tourists** and so enhance their experience.

**8 partners from 5 countries:** Belgium, Spain, Italy, Latvia, and Portugal

**Implementation period.** May 2018 – October 2019

# The Greenways Heritage Project

- ✓ Many greenways cross territories of high historical-cultural value, characterized by the **presence of UNESCO sites.**
- ✓ Currently, **there isn't a specific touristic offer** able to combine greenways and UNESCO sites: the two **users typologies are considered as separate.**



*"Burgos Cathedral" (Spain)*



*Vía Verde del Ferrocarril Vasco Navarro*



*"Historic Centre of Riga" (Latvia)*

# The Greenways Heritage Project

## Tourism product

- ✓ Creation of **tourism product package** through **collaboration agreements**.
- ✓ Improving the competitiveness of SMEs:
  - improving skills and raising awareness;
  - strengthening public-private cooperation.

## Technologies in Cultural and Creative Industries

- ✓ Creation of a **multiplatform web-application**, containing **all the information** on Greenways Heritage itineraries.
- ✓ **360° virtual tour**
- ✓ **Best practices guide** - new technologies used on Cultural UNESCO sites and greenways

## Promotion & Communication

- ✓ **Declaration** for UNESCO and greenways as common destination
- ✓ **Workshops and conferences;**
- ✓ **Valorisation strategy**
- ✓ **Best practices guide**
- ✓ **Special GWH award**

# Activities

---

1. **Detailed mapping** of all the information related to UNESCO and heritage sites and the connected greenways
2. Creation of a touristic **Geographical Information System** (GIS) containing all the data collected and mapped.
3. Development of a multiplatform **Web-GIS based application** to share “via-Web” the data of the GIS
4. Development of the "**Heritage Greenways**" brand in order to promote this new transnational thematic tourism product
5. Raise "**Heritage Greenways**" brand awareness
6. Produce a **360 VR tour** with 360 movies, 360 tours and 3D imaging in the green outdoor area of Mechelen
7. Better know **Best practices** regarding the use of CCI at cultural sites and on greenways

# Activity 1: detailed mapping

---

This activity consists of **gathering and mapping** (at 1:10.000/1:25.000 scale) all the **information** related to the territories characterized by:

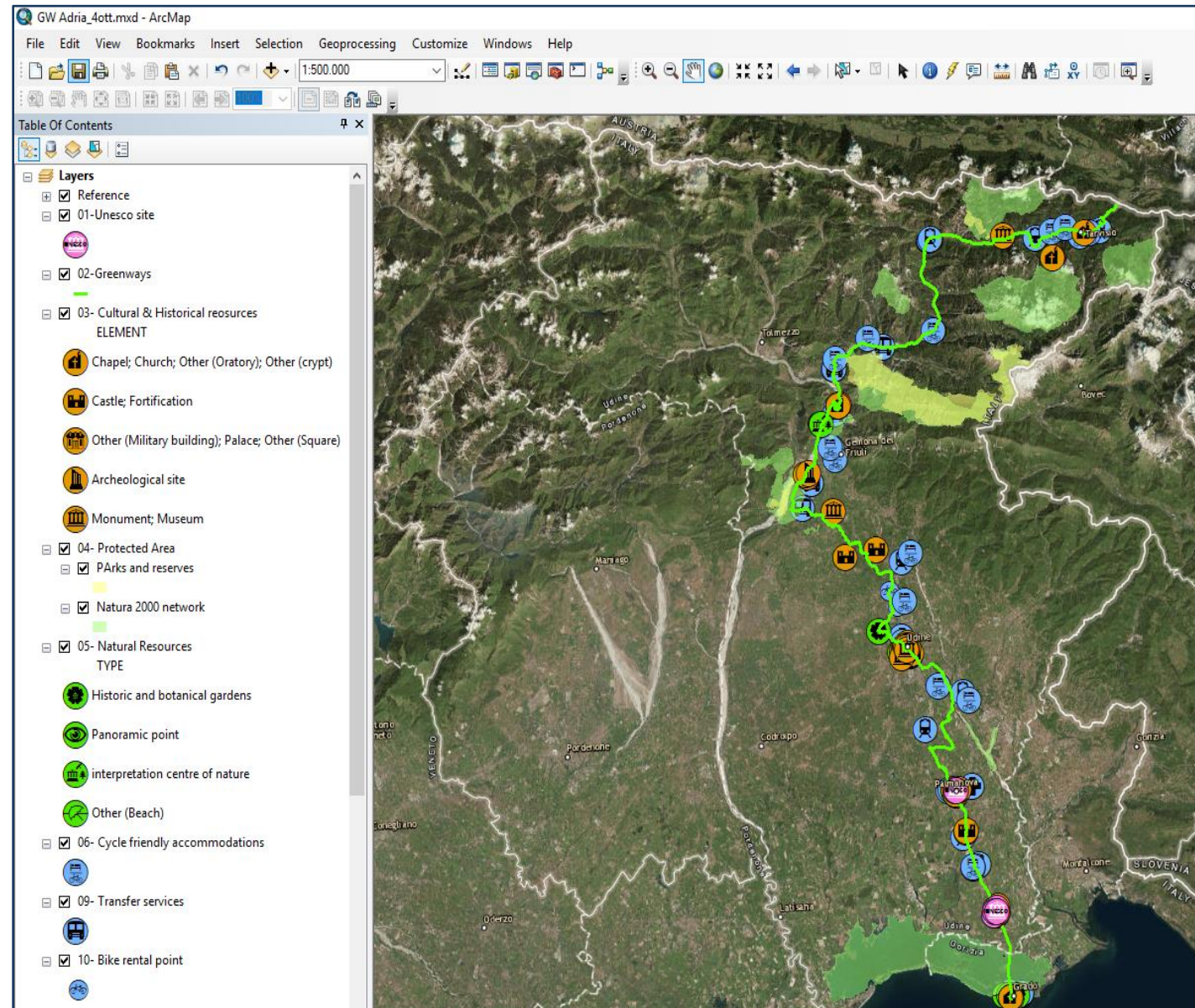
- the presence of a **UNESCO site**
- and the presence of a **greenway**.

The information to gather are related to:

- natural, cultural and historical resources,
- touristic attractions,
- accessibility,
- services.

# Activity 2: Greenways Heritage Touristic GIS

The information collected and mapped in activity 1 will be organized in a GIS database, that will contain data related to **attractions, sites, destinations and tourism related services.**



# Activity 2: Greenways Heritage Touristic GIS

---

## Information collected

- a) The information collected have been organized in **14 entities or layers**.
- b) The data for each layer have been collected from *official sources*, when possible (e.g: UNESCO organization, national and regional touristic agencies, etc.).
- c) Different **buffer zones** have been defined, in order to identify the resources and touristic services to be mapped (on the base of *the literature related to pedestrian and cycle touristic activities*).



# Activity 2: Greenways Heritage Touristic GIS

Layers, criteria and sources of the information

Layer ID	Layer	Geometry type	Source	Criteria for selection
01	UNESCO sites [UNESCO]	Point	UNESCO web site	<b>Max 10 km</b> from a greenway
02	Greenways [GW]	Polyline	Partner knowledge	Max 10 km from a UNESCO sites
03	Cultural-Historical resources [CHR]	Point	Official touristic Information	<b>Max 2,5 km</b> from a greenway
04	Protected Areas [PA]	Polygon	Official list of national protected area	Max 2,5 km from a greenway
05	Natural Resources (NR)	Point	Official touristic Information	Max 2,5 km from a greenway
06	Cycle friendly accommodations (CA)	Point	Official cycle friendly certification; ex. Bed and Bike (DE)	<b>Max 5 km</b> from a greenway
07	Generic Accommodations (GA)	Point	National/regional touristic databases	Max 2,5 km from a greenway
08	Food & Beverage (bar, restaurant, etc.) [F&B]	Point	Partner knowledge	<b>Max 1 km</b> from a greenway
09	Transfer Services [TS]	Point	Partner knowledge	Max 2,5 km from a greenway
10	Bike Rental points [BR]	Point	Official touristic Information; partner knowledge	Max 2,5 km from a greenway
11	Rail Stations [RS]	Point	Railway company	Max 2,5 km from a greenway
12	Public Navigation Services [PNS]	Point	Navigation Company	Max 2,5 km from a greenway
13	Emergencies [EM]	Point	Official Information	Max 2,5 km from a greenway
14	Touristic Information points [TI]	Point	Official touristic Information	Max 1 km from a greenway

# Activity 2: Greenways Heritage Touristic GIS

01 - UNESCO sites



02 - Greenways



03 - Cultural & Historical resources:

*Religious buildings (chapels, churches, monasteries, etc.)*



*Castles, towers and fortifications*



*Archeological sites and ruins*



*Museums and monuments*



*Palaces, villas and other civil buildings*



04 - Protected areas



05 - Natural Resources:

*Historic and botanical gardens*



*Panoramic points*



*Interpretation centers of nature*



*Other natural resources*



06 - Cycle friendly accommodations



07 - Generic Accommodations



08 - Food & Beverage



09 - Transfer services



10 - Bike rental points



11 - Rail stations



12 - Public Navigation Services



13 - Emergencies



14 - Touristic Information points



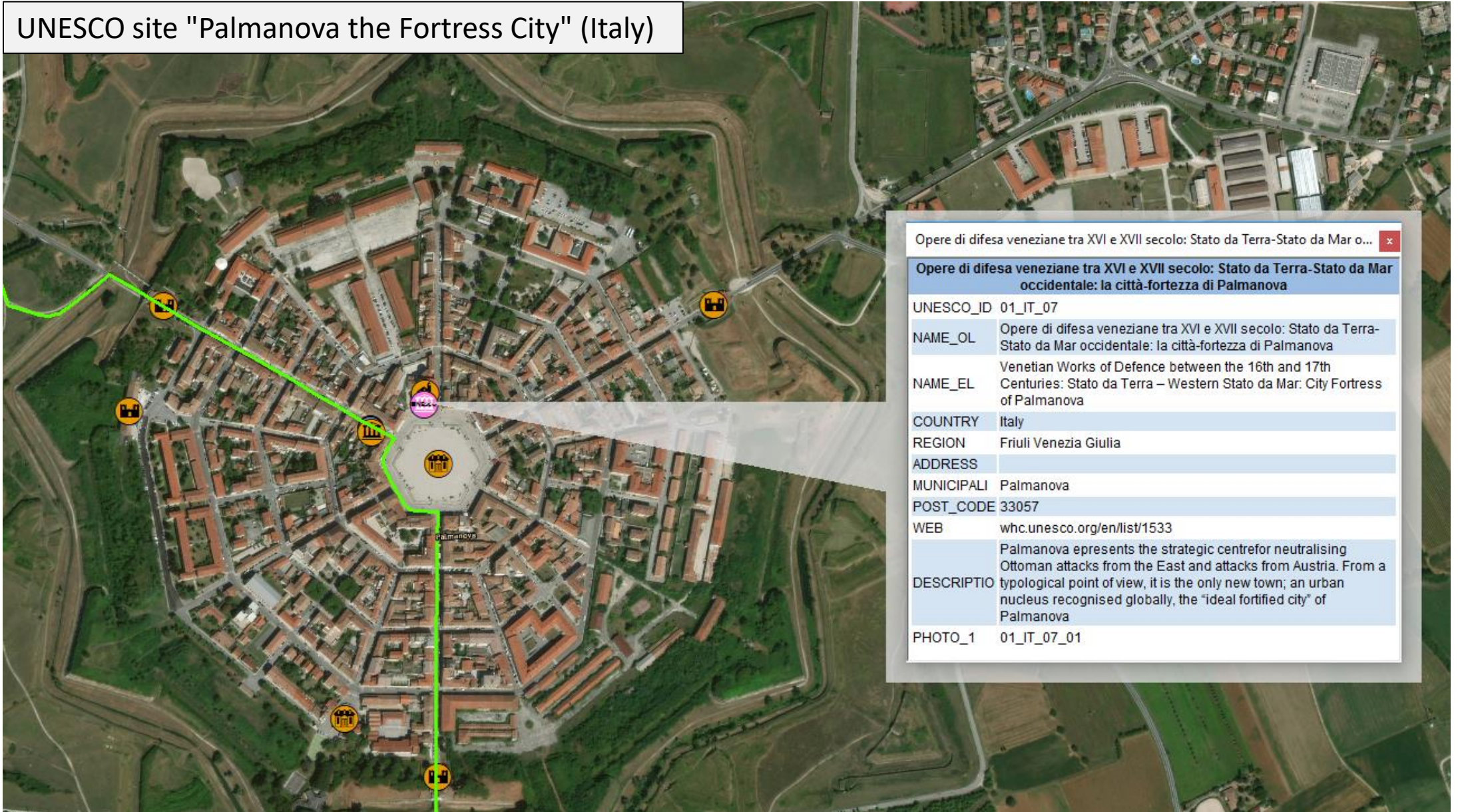
# Activity 2: Greenways Heritage Touristic GIS

## Resources and services mapped (work in progress)

- ✓ **14** UNESCO sites
- ✓ **7** greenways connected to the UNESCO sites (651 km):
  - *Vía Verde de la Sierra de la Demanda (Spain): 54 Km;*
  - *Vía Verde de los Montes de Hierro (Spain): 43 km;*
  - *Vía Verde del Ferrocarril Vasco Navarro (Spain): 127 Km.*
  - *Vennbahn (Germany, Belgium, Luxembourg): 125 Km;*
  - *Alpe Adria (Italy): 183 Km;*
  - *Beghina (Belgium): 40 Km;*
  - *Rīga - Ērgļi (Latvia): 79 Km.*
- ✓ **210** cultural-historical resources;
- ✓ **74** natural resources;
- ✓ **114** cycle friendly accommodations and + **380** generic accommodations;
- ✓ **+ 1800** Food & Beverage;
- ✓ **31** bike rental points and **18** transfer services;
- ✓ **54** rail stations and **1** public navigation services;
- ✓ **5** emergencies;
- ✓ **34** touristic information points.

# Activity 2: Greenways Heritage Touristic GIS

UNESCO site "Palmanova the Fortress City" (Italy)

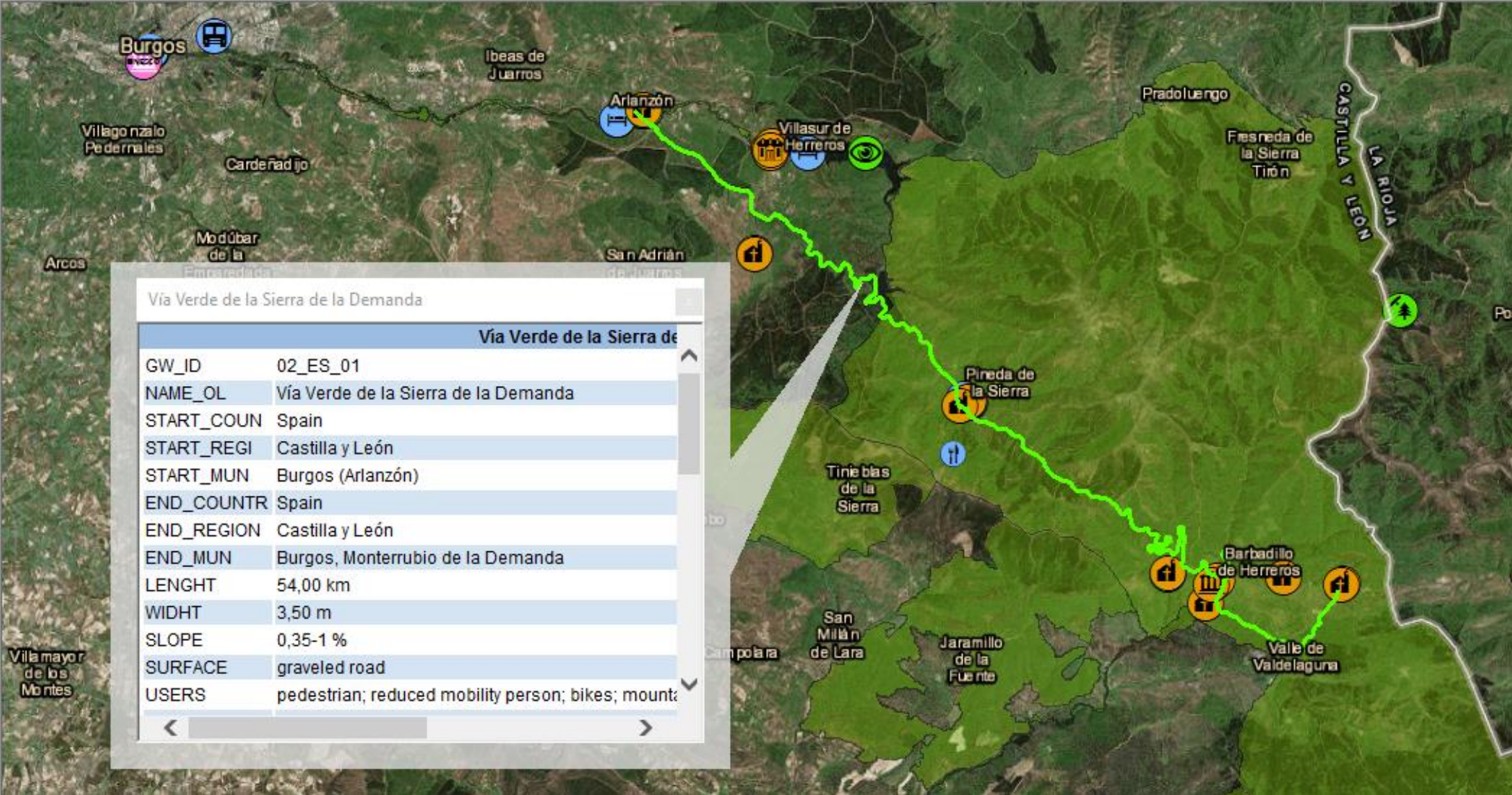


Opere di difesa veneziane tra XVI e XVII secolo: Stato da Terra-Stato da Mar occidentale: la città-fortezza di Palmanova	
UNESCO_ID	01_IT_07
NAME_OL	Opere di difesa veneziane tra XVI e XVII secolo: Stato da Terra-Stato da Mar occidentale: la città-fortezza di Palmanova
NAME_EL	Venetian Works of Defence between the 16th and 17th Centuries: Stato da Terra – Western Stato da Mar: City Fortress of Palmanova
COUNTRY	Italy
REGION	Friuli Venezia Giulia
ADDRESS	
MUNICIPALI	Palmanova
POST_CODE	33057
WEB	<a href="http://whc.unesco.org/en/list/1533">whc.unesco.org/en/list/1533</a>
DESCRIPTIO	Palmanova represents the strategic centre for neutralising Ottoman attacks from the East and attacks from Austria. From a typological point of view, it is the only new town; an urban nucleus recognised globally, the "ideal fortified city" of Palmanova
PHOTO_1	01_IT_07_01



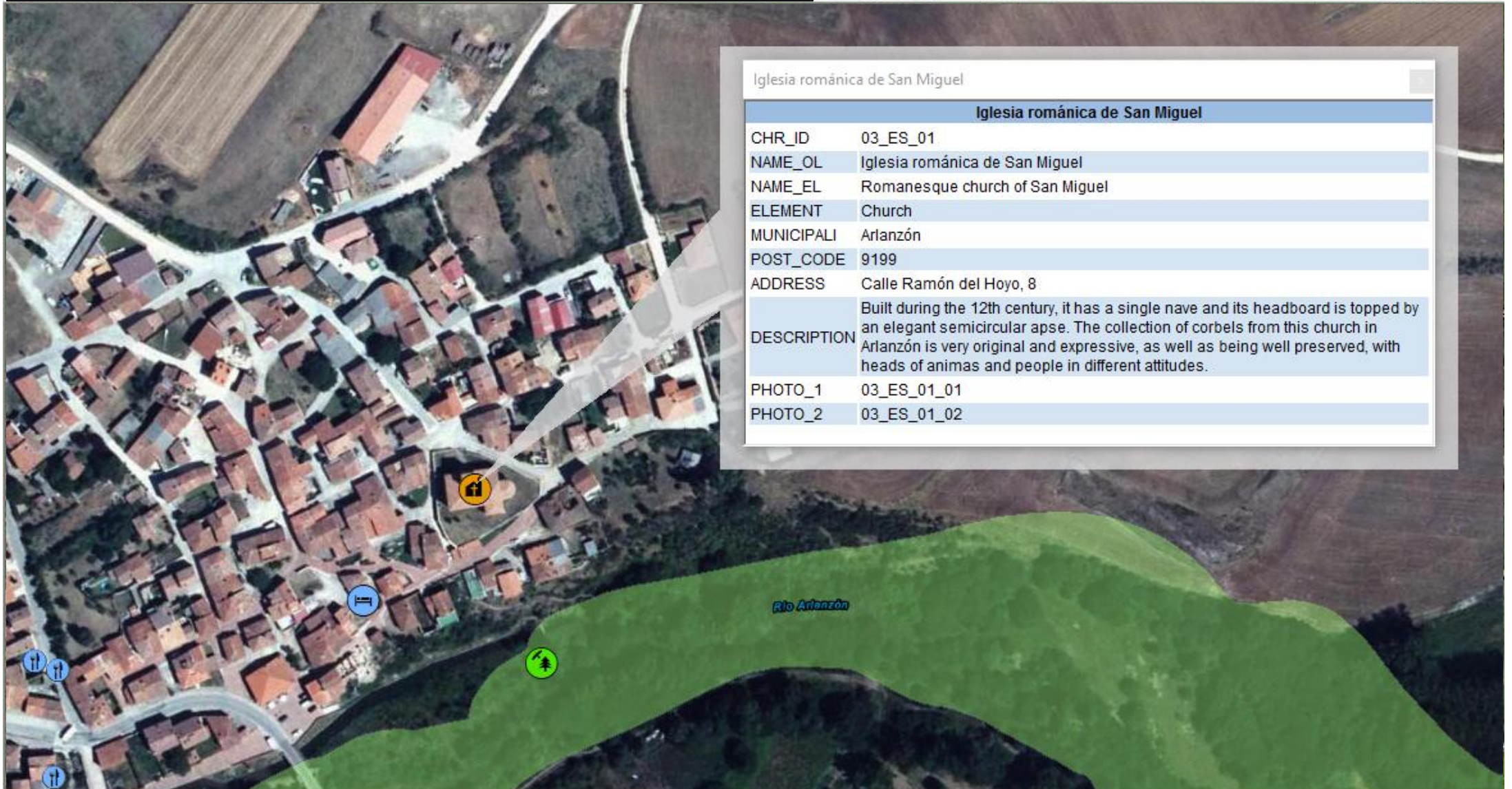
# Activity 2: Greenways Heritage Touristic GIS

Greenway “Via Verde de la Sierra de la Demanda” (Spain)



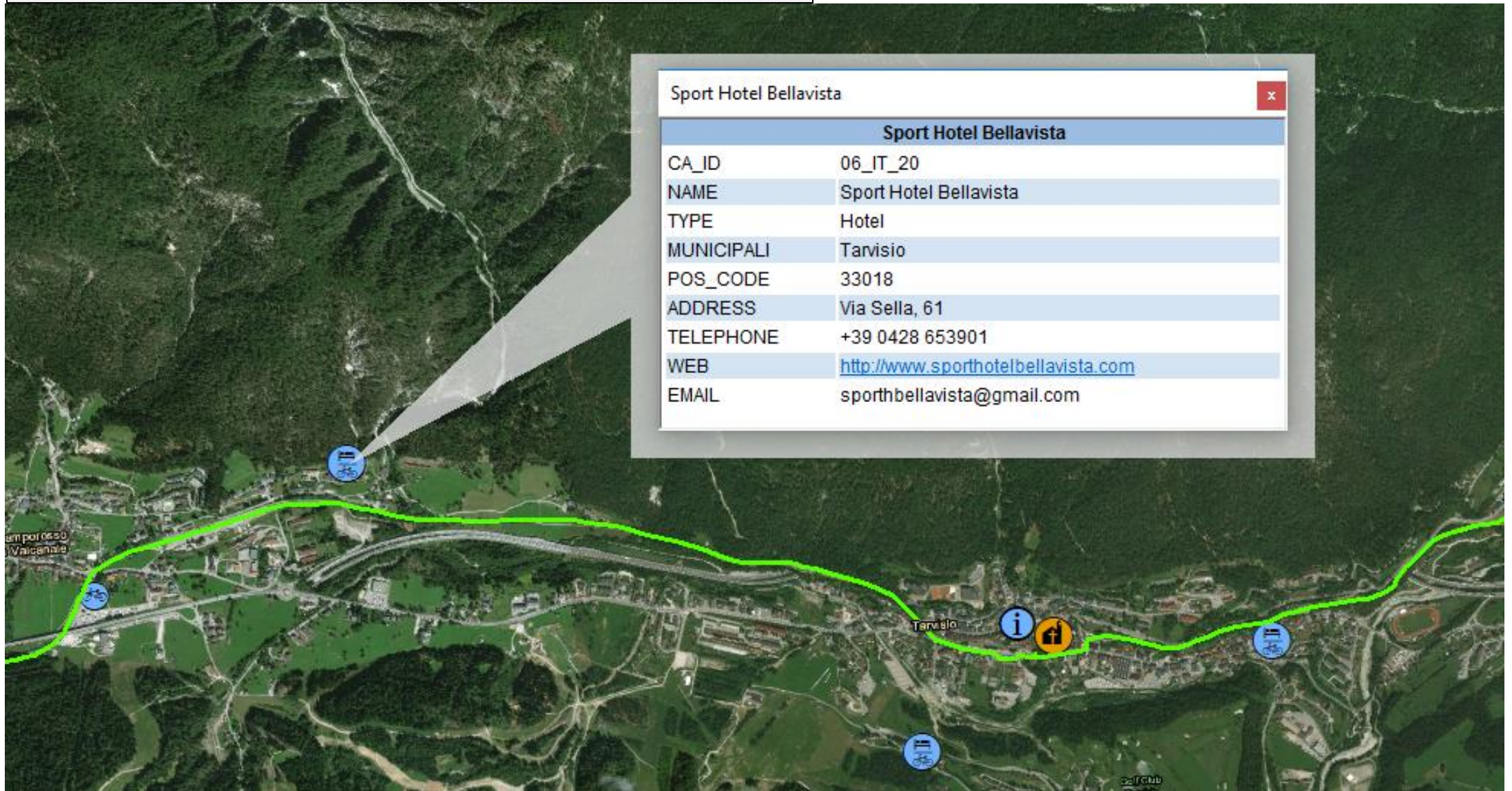
# Activity 2: Greenways Heritage Touristic GIS

Cultural-historical resource (Spain)



# Activity 2: Greenways Heritage Touristic GIS

Cycle friendly accommodation (Italy)

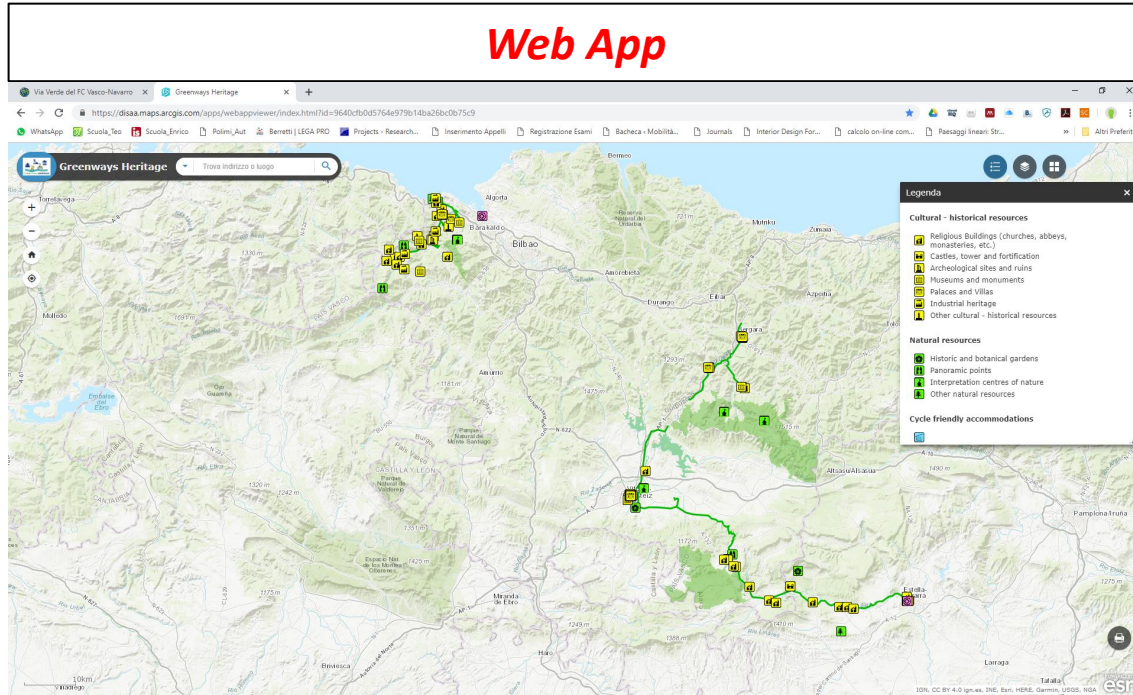


# Activity

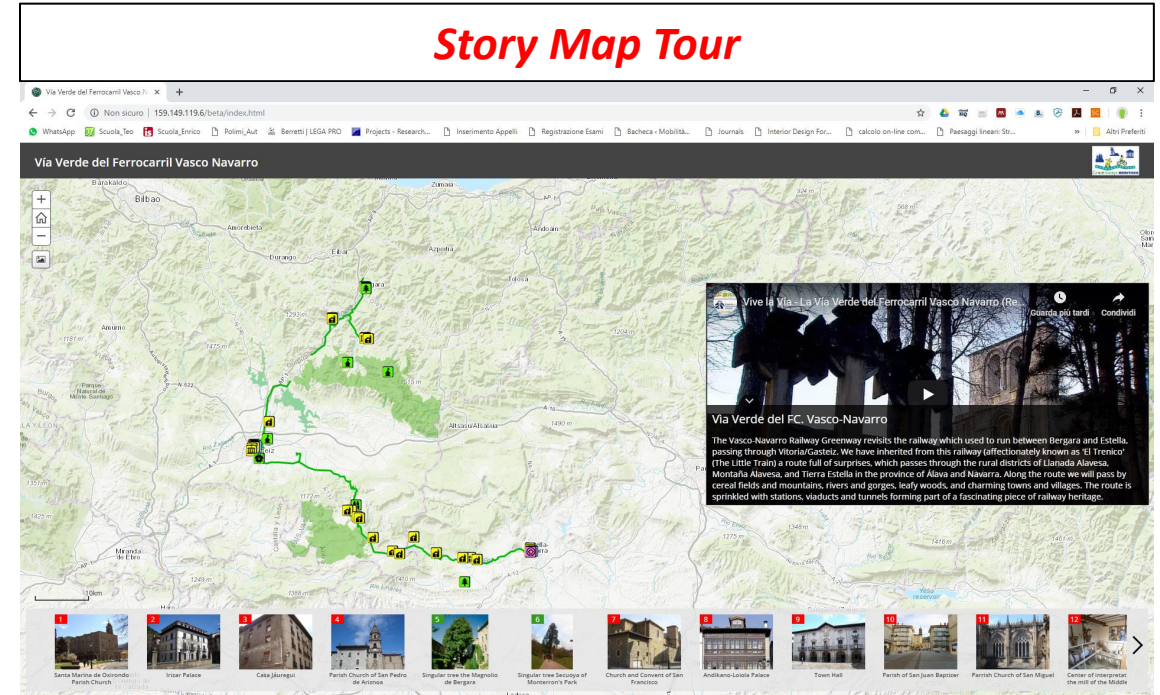
The Database will be shared with tourists and stakeholders through the development of a multiplatform Web-GIS based application that will run on any device and Operation System.

The application will be based on the integration of **two tools**:

## Web App

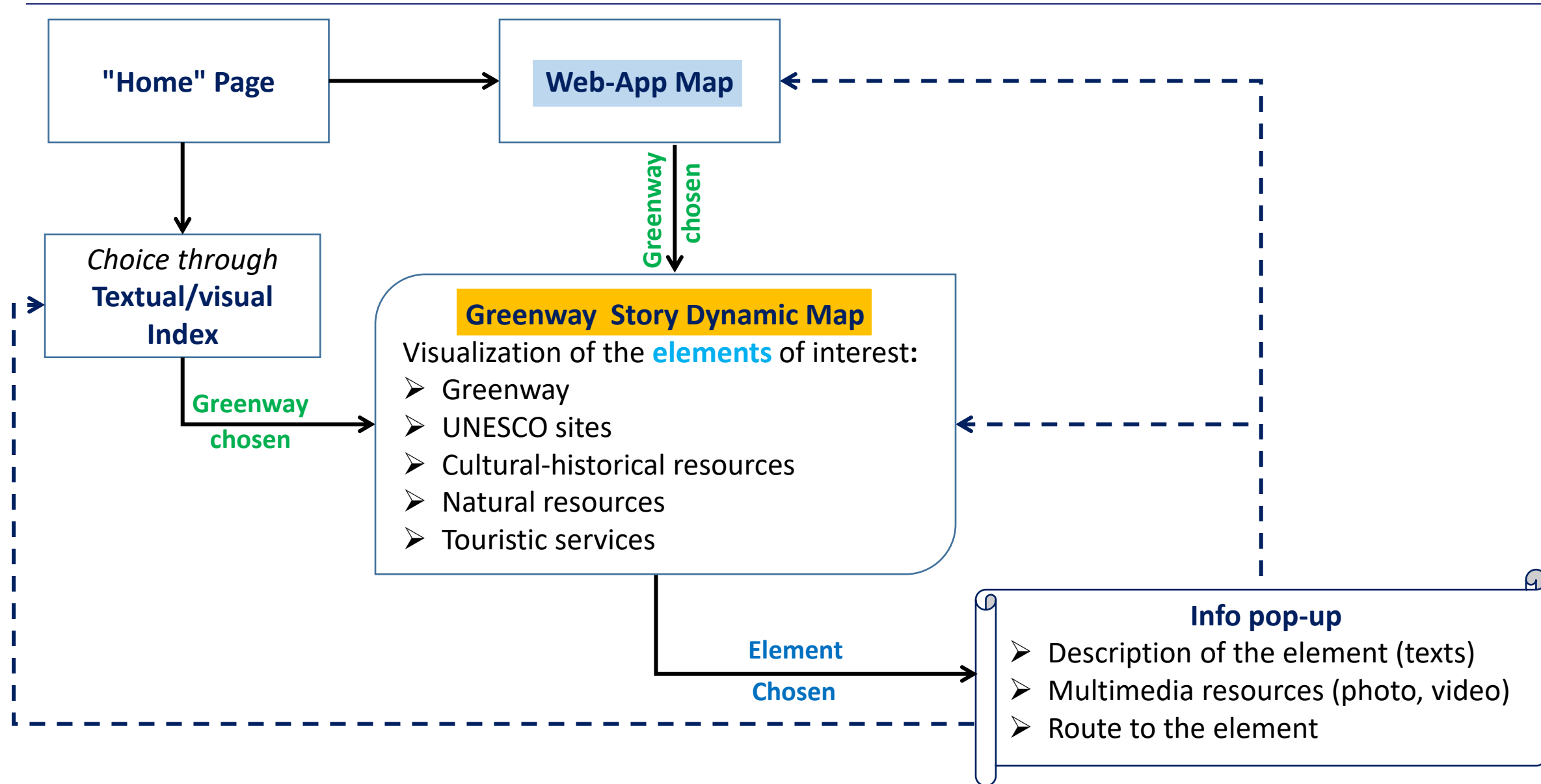


## Story Map Tour



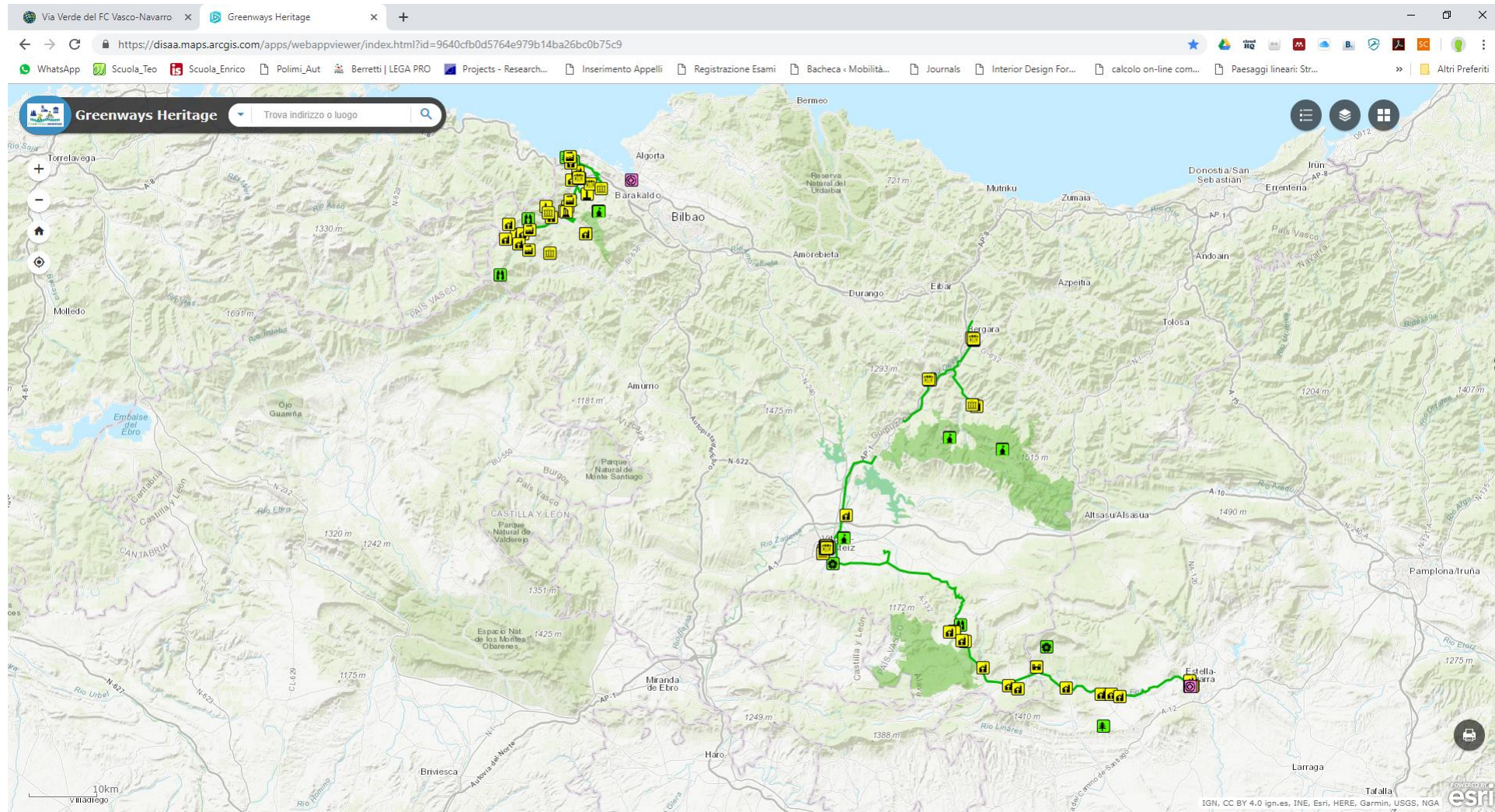


# Activity 3: Web-GIS based Multiplatform application



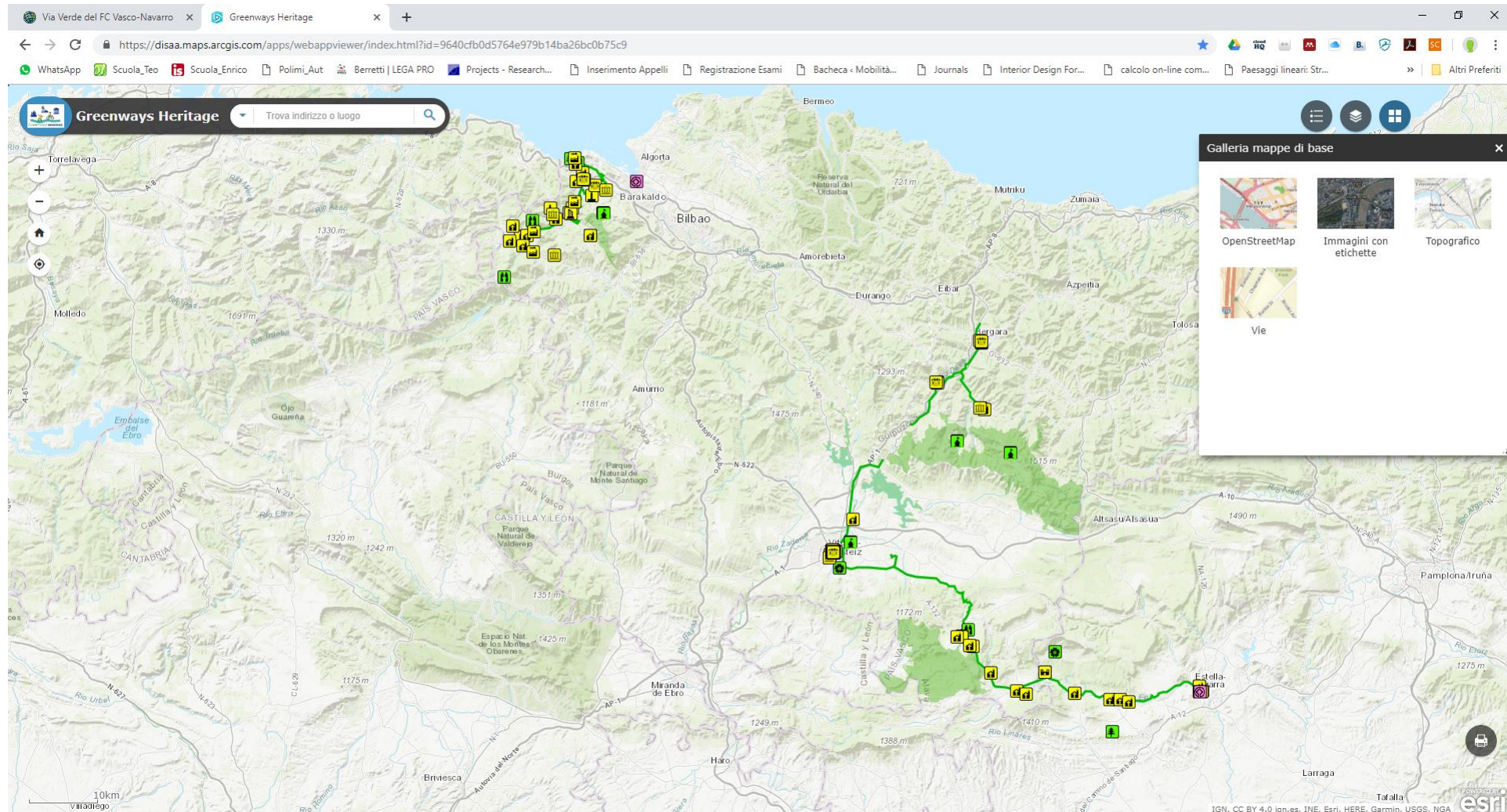
# Activity 3: Web-GIS based Multiplatform application

The GIS will be shared to tourists and stakeholders through the development of a Web-GIS based application that will run on any device and OS using the ESRI GIS technologies.



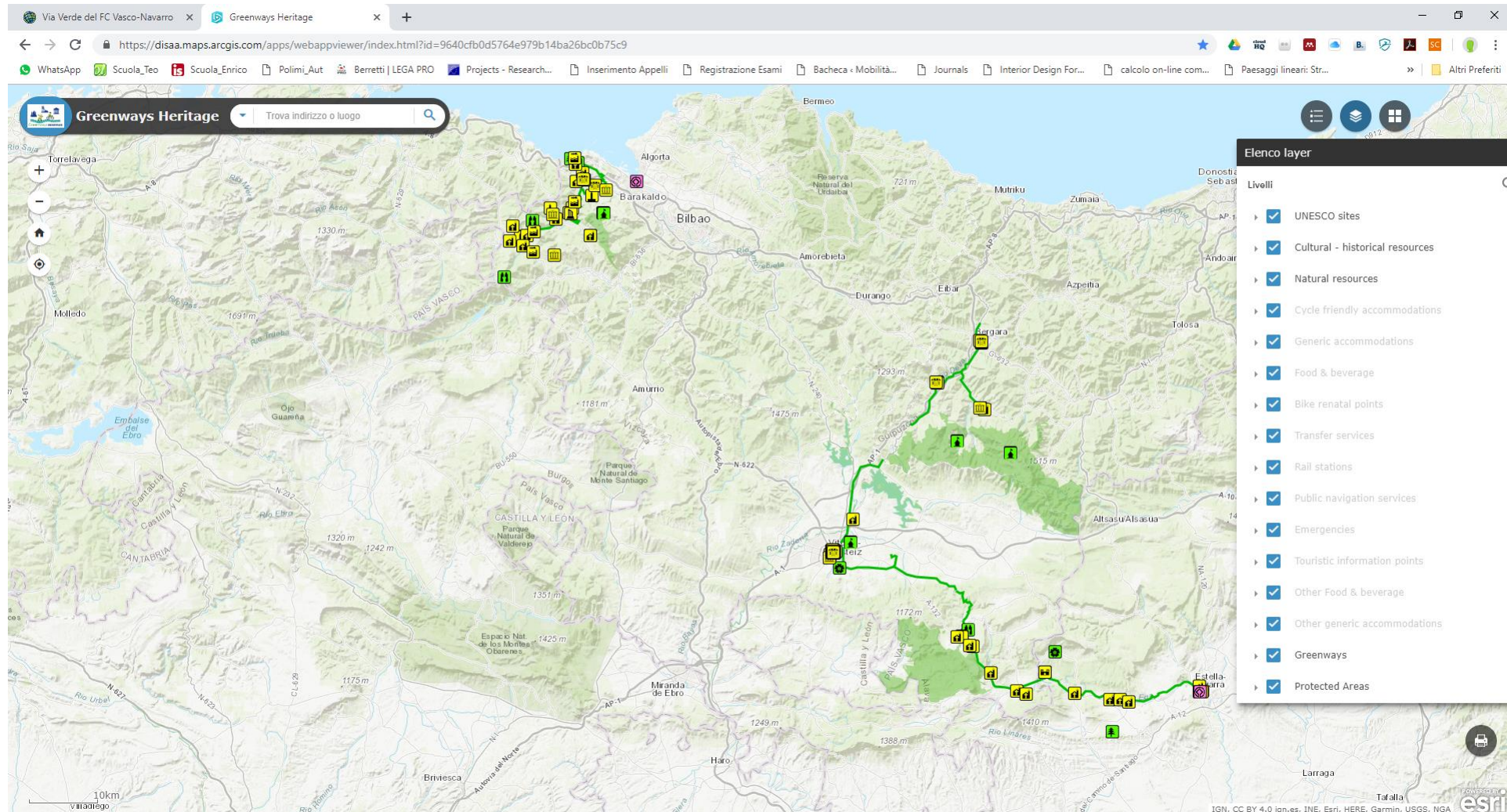
# Activity 3: Web-GIS based Multiplatform application

The GIS will be shared to tourists and stakeholders through the development of a Web-GIS based application that will run on any device and OS using the ESRI GIS technologies.



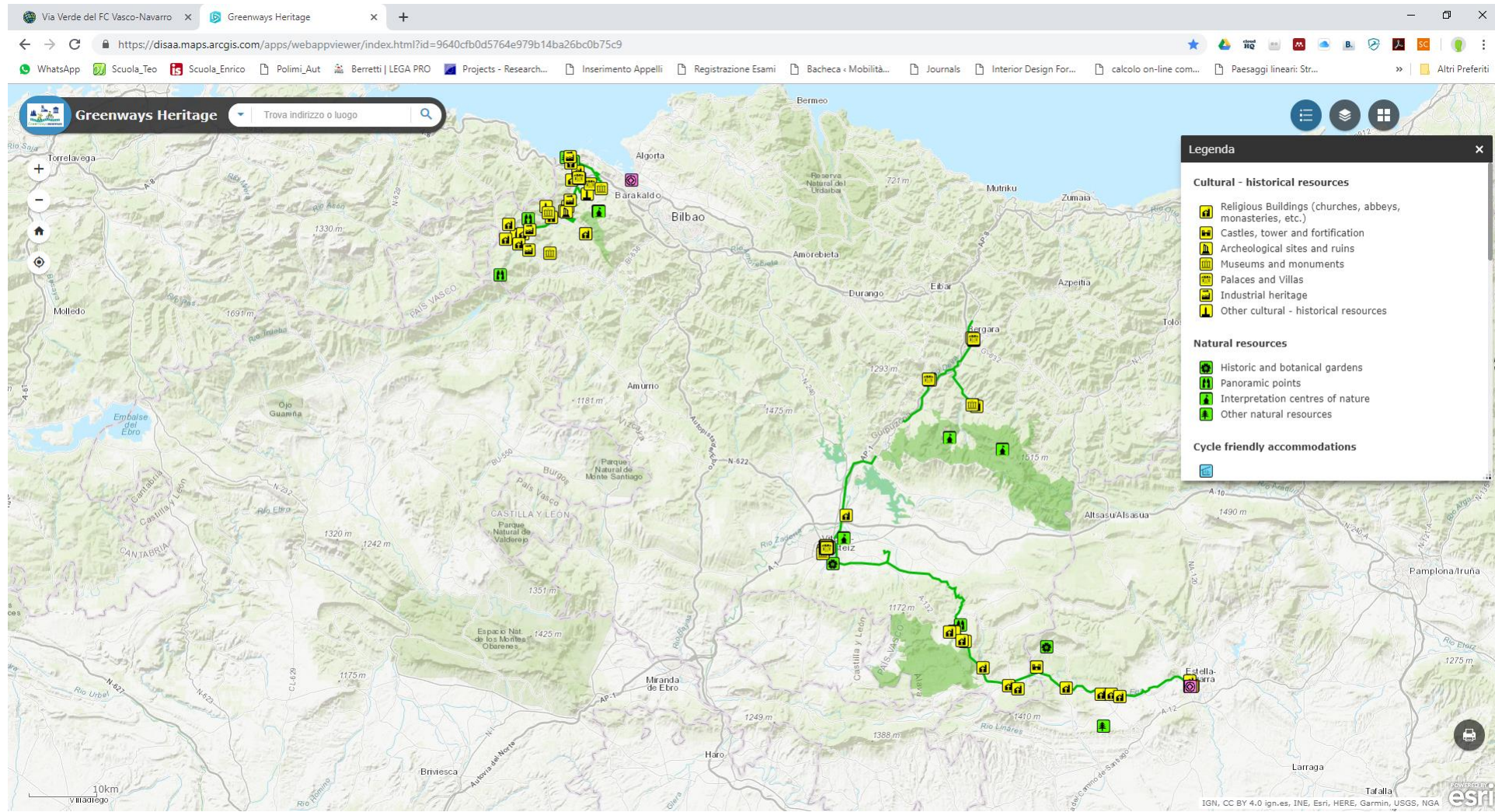
# Activity 3: Web-GIS based Multiplatform application

The GIS will be shared to tourists and stakeholders through the development of a Web-GIS based application that will run on any device and OS using the ESRI GIS technologies.



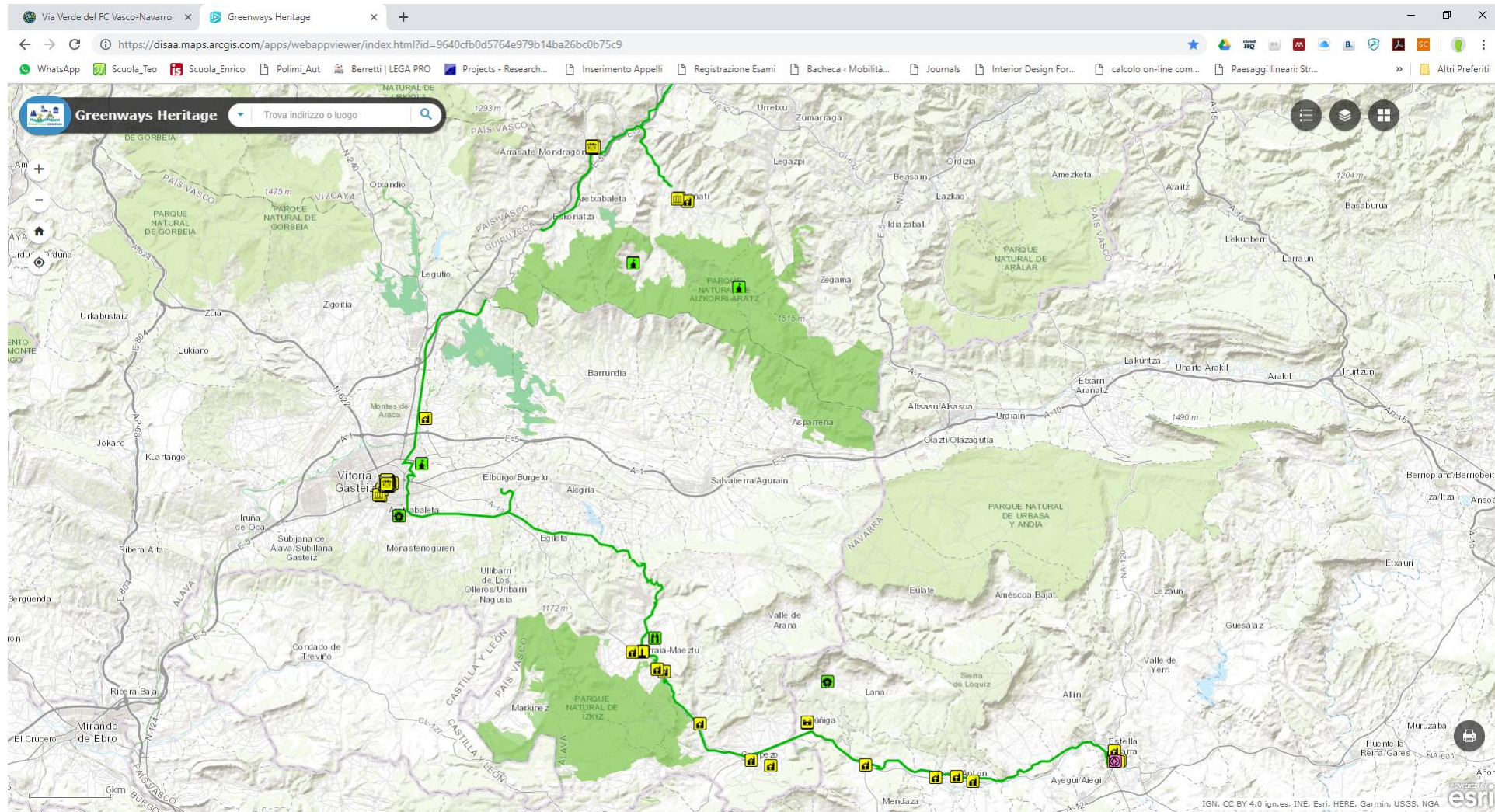
# Activity 3: Web-GIS based Multiplatform application

The GIS will be shared to tourists and stakeholders through the development of a Web-GIS based application that will run on any device and OS using the ESRI GIS technologies.



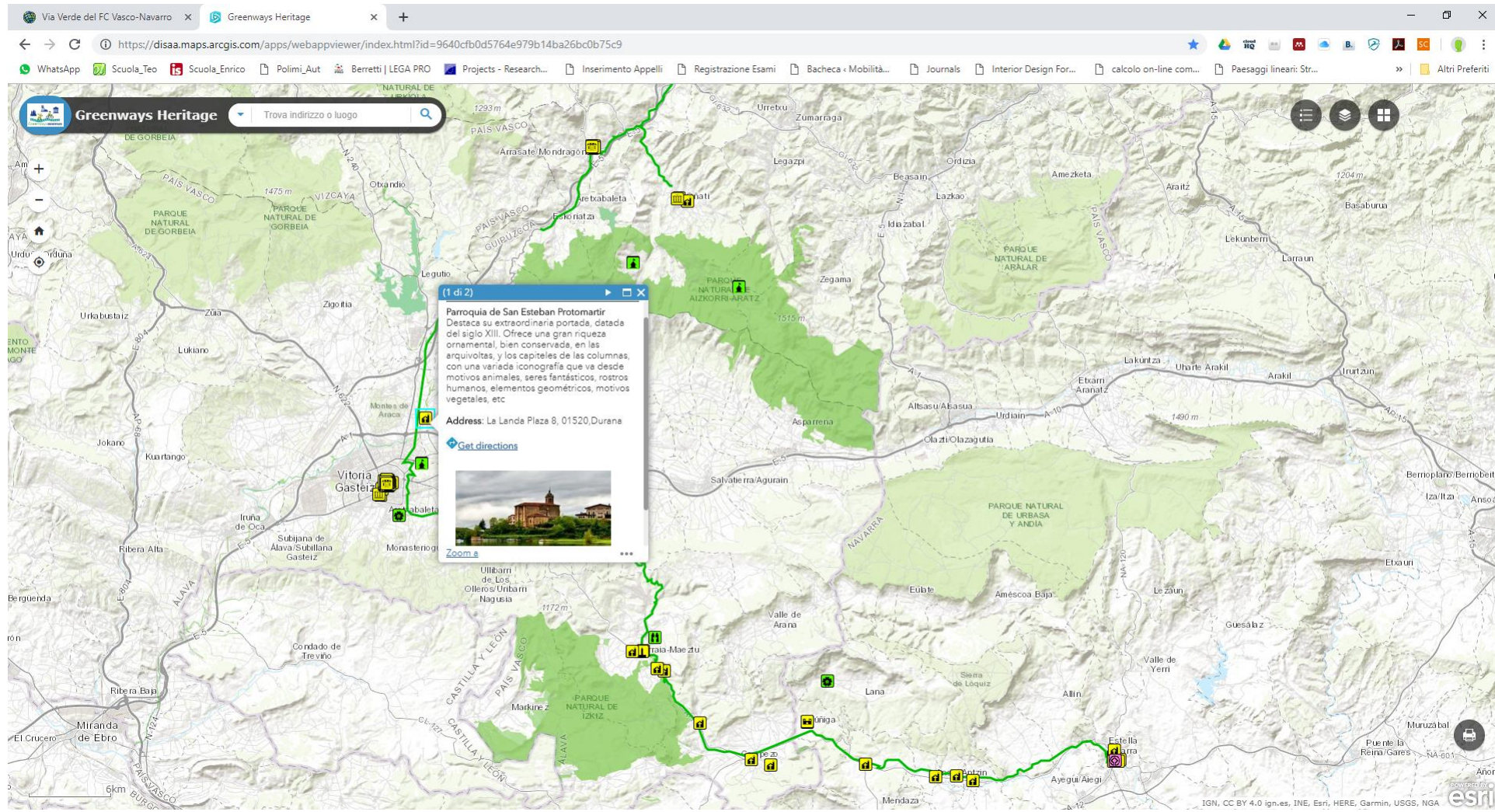
# Activity 3: Web-GIS based Multiplatform application

The GIS will be shared to tourists and stakeholders through the development of a Web-GIS based application that will run on any device and OS using the ESRI GIS technologies.



# Activity 3: Web-GIS based Multiplatform application

The GIS will be shared to tourists and stakeholders through the development of a Web-GIS based application that will run on any device and OS using the ESRI GIS technologies.



# Activity 3: Web-GIS based Multiplatform application

The GIS will be shared to tourists and stakeholders through the development of a Web-GIS based application that will run on any device and OS using the ESRI GIS technologies.

Vía Verde del Ferrocarril Vasco Navarro

Vive la Vía - La Vía Verde del Ferrocarril Vasco Navarro (Re...  
Guarda più tardi Condividi

Vía Verde del FC. Vasco-Navarro

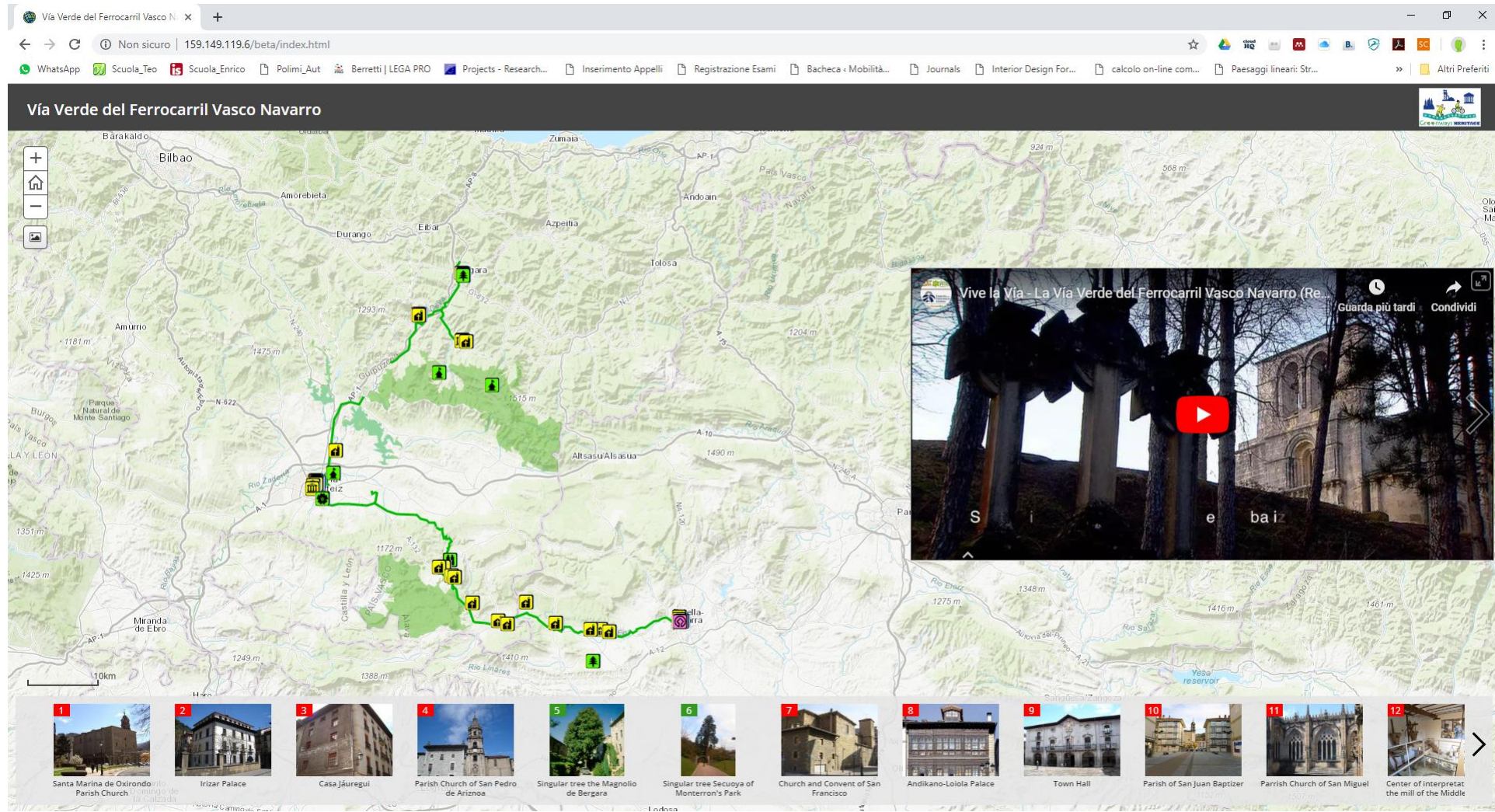
The Vasco-Navarro Railway Greenway revisits the railway which used to run between Bergara and Estella, passing through Vitoria/Gasteiz. We have inherited from this railway (affectionately known as 'El Trenico' (The Little Train) a route full of surprises, which passes through the rural districts of Llanada Alavesa, Montaña Alavesa, and Tierra Estella in the province of Álava and Navarra. Along the route we will pass by cereal fields and mountains, rivers and gorges, leafy woods, and charming towns and villages. The route is sprinkled with stations, viaducts and tunnels forming part of a fascinating piece of railway heritage.

- 1 Santa Marina de Oxindondo Parish Church
- 2 Irizar Palace
- 3 Casa Jáuregui
- 4 Parish Church of San Pedro de Ariznoa
- 5 Singular tree the Magnolio de Bergara
- 6 Singular tree Secuoya of Monterron's Park
- 7 Church and Convent of San Francisco
- 8 Andikano-Loiola Palace
- 9 Town Hall
- 10 Parish of San Juan Baptizer
- 11 Parrish Church of San Miguel
- 12 Center of interpretat the mill of the Middle



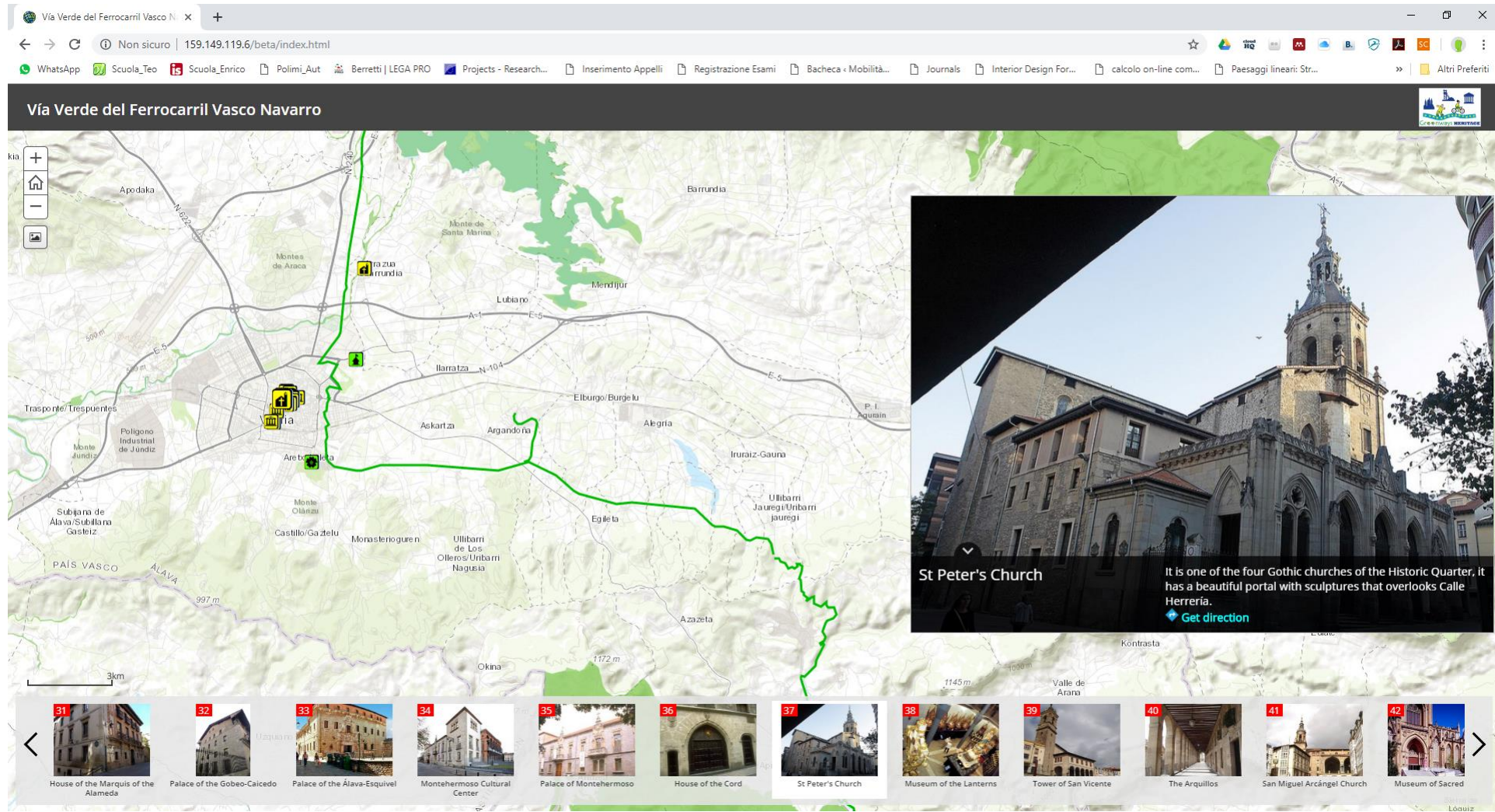
# Activity 3: Web-GIS based Multiplatform application

The GIS will be shared to tourists and stakeholders through the development of a Web-GIS based application that will run on any device and OS using the ESRI GIS technologies.



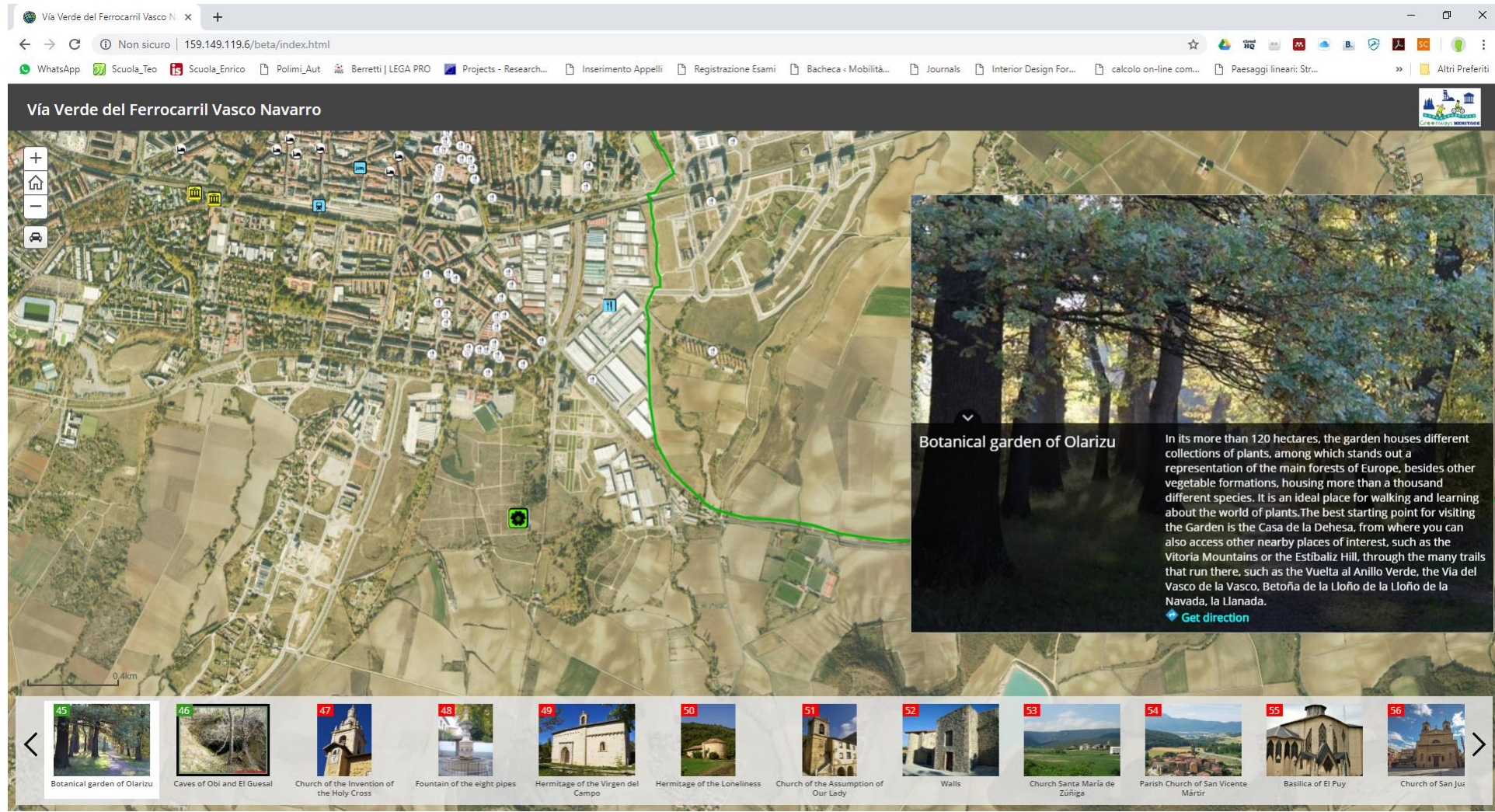
# Activity 3: Web-GIS based Multiplatform application

The GIS will be shared to tourists and stakeholders through the development of a Web-GIS based application that will run on any device and OS using the ESRI GIS technologies.



# Activity 3: Web-GIS based Multiplatform application

The GIS will be shared to tourists and stakeholders through the development of a Web-GIS based application that will run on any device and OS using the ESRI GIS technologies.





UNIVERSITÀ DEGLI STUDI DI MILANO

Dipartimento di Scienze Agrarie e Ambientali



# The Greenways Heritage tourism GIS (Geographical Information System), promoting greenways across Europe

**Grazie per l'attenzione**

*Giulio Senes*